

Prestige 681

SDSL Router



ZyXEL's standard-based Prestige 681 Symmetric Digital Subscriber Line (SDSL) router provides a symmetrical transmission speed Up to 2.3 Mbps through SDSL connection over copper line. This SDSL router allows to choose the connection speed based on demand and cost. Besides, it can be configured in either server or client mode providing a point-to-point connectivity between two sites. A pair of ZyXEL's Prestige 681 routers offer a cost effective solution for bandwidth-hungry applications such as video-conferencing and distance learning over twisted wire pair. Coupled with ZyNOS, ZyXEL's feature-rich networking software, the Prestige 681 is indeed an ideal symmetrical high speed solution for LAN-to-LAN connectivity and Internet Access.

SDSL Compliance

- 2B1Q line code
- Symmetrical data rate selection from 144Kbps to 2.32Mbps
- Manual rate configuration
- Server or client mode

Frame Relay Support

- Multiple protocol over Frame Relay (RFC1490)
- ITU-T Q.933 Annex A; ANSI T1.617 Annex D

PPP Support

- PPP in HDLC (RFC 1662)
- PPP in Frame Relay (RFC 1973)*

Internet Access Sharing

- Single User Account(SUA)/Network Address Translation(NAT) enables multiple workstations on the LAN to access the Internet for the cost of only one ISP account
- NAT supports Port Address Translation (PAT) and multimedia applications (NetMeeting, CuSeeMe, ICQ, and others)

SDSL maximum transmission distance

Data Rate	Distance(feet)
144K	16,000
272K	14,000
400K	13,000
528K	12,000
784K	11,500
1168K	11,000
1552K	10,000
2320K	7,500

- Test condition:consultronics DLS-90 26AWG, no noise added.

Network Protocols

- IP routing supports RIP-1 and RIP-2
- DHCP server automatically assigns IP addresses to the workstations.
- DHCP client capability automatically gets IP and DNS server address from DHCP server at ISP. DNS Proxy replies automatically to client DNS requests.
- IPX/Transparent bridging

Network Management

- Windows-based configuration software (Prestige Network Commander)
- Menu-driven text based interface
- Local and remote terminal management
- FTP/TFTP firmware upgrade and configuration backup and restore
- SNMP support

Robust Security Features

- Packet Filtering for controlled access to and from your LAN
- Password Protected System Management Terminal

Physical Interfaces

- One RJ-11 port for SDSL connection
- One RJ-45 port for 10/100M Ethernet LAN connection
- One RS-232 port for local configuration and management

* Future feature.

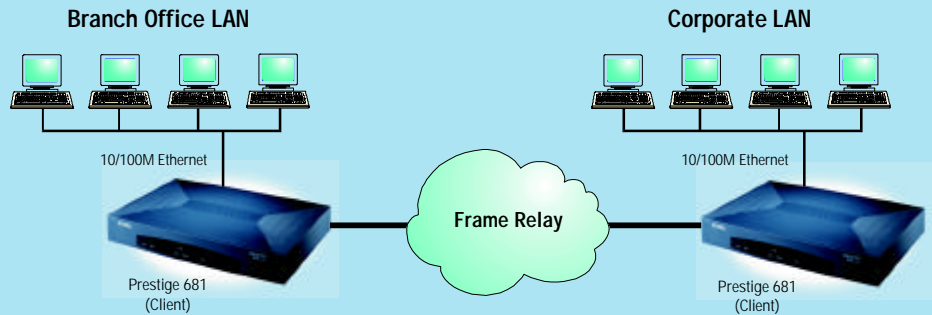
ZyXEL
TOTAL INTERNET ACCESS SOLUTION

Prestige 681

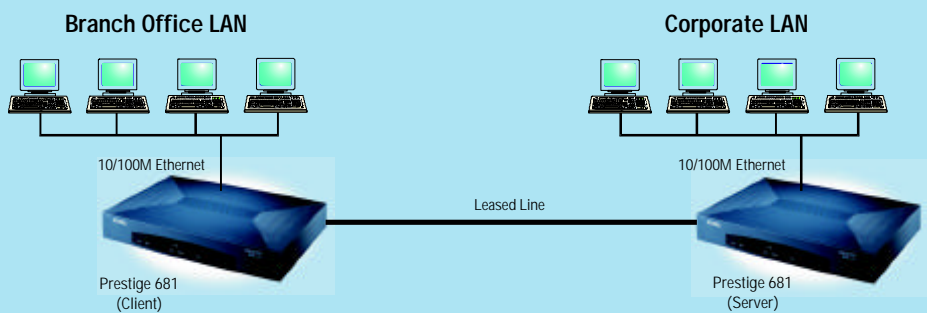
LAN to LAN Connectivity

The Prestige 681 can be configured in a server mode or client mode to provide a point-to-point connectivity between two LANs. It can offer a cost-effective way for bandwidth-consuming applications, such as video-conferencing and distance learning.

LAN to LAN Connectivity via Frame Relay

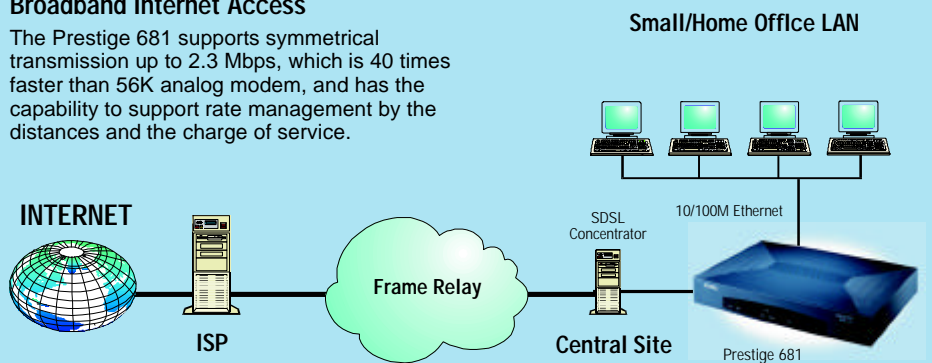


LAN to LAN Connectivity via Leased Line



Broadband Internet Access

The Prestige 681 supports symmetrical transmission up to 2.3 Mbps, which is 40 times faster than 56K analog modem, and has the capability to support rate management by the distances and the charge of service.



ISO 9001 Certified.



This product is based on the ZyNOS Networking Operating System with free firmware upgrades that can be downloaded as they become available.

Specifications are subject to change without notice.

All trademarks are the property of their respective owners.

ZyXEL

TOTAL INTERNET ACCESS SOLUTION

International:

ZyXEL Communications Corp.
Tel: 886-3-5783942
Fax: 886-3-5782439
E-mail: sales@zyxel.com.tw
support@zyxel.com.tw
Web: <http://www.zyxel.com>

North America:

ZyXEL Communications, Inc.
Tel: 714-632-0882
Fax: 714-632-0858
E-mail: sales@zyxel.com
support@zyxel.com
Web: <http://www.zyxel.com>

Scandinavia:

ZyXEL Communications A/S
Tel: 45-3955-0700
Fax: 45-3955-0707
E-mail: sales@zyxel.dk
support@zyxel.dk
Web: <http://www.zyxel.dk>

Germany:

ZyXEL Deutschland GmbH.
Tel: +49-2405-6909-0
Fax: +49-2405-6909-99
E-mail: sales@zyxel.de
support@zyxel.de
Web: <http://www.zyxel.de>

Austria:

ZyXEL Communications Services GmbH.
Tel: +43-1-4948677-0
Fax: +43-1-4948678
E-mail: sales@zyxel.at
support@zyxel.at
Web: <http://www.zyxel.at>