

ZyAIR G-300

Wireless LAN PCI Adapter

Quick Installation Guide

Version 1.0

October 2003



Procedure to View a Product's Certification(s)

1. Go to www.zyxel.com
2. Select your product from the drop-down list box on the ZyXEL home page to go to that product's page.
3. Select the certification you wish to view from this page.

1. Installation Requirements

Before installation, make sure you have the following requirements.

- A minimum of 5 MB available hard disk space
- A CD-ROM drive
- A 32-bit (v2.2) PCI slot
- Windows 98 SE/Me/2000/XP
- Windows 98 SE users may need the Windows 98 SE CD

2. Hardware Installation

Follow the steps below to install the ZyAIR in your computer.

1. Save your work and close all applications.
2. Turn off the computer and peripheral device, such as the printer. Then disconnect the computer power cord from the power source.
3. Ground yourself by wearing an anti-static wrist strap or touching a metal object. Remove the computer cover and the ZyAIR from its packaging.
4. Insert the ZyAIR into an available PCI slot. Make sure the ZyAIR's contacts are fully seated in the PCI slot.

5. Secure the ZyAIR to the computer with a bracket screw.
6. Attach the included antenna to the ZyAIR. The antenna should be perpendicular to the ground.
7. Replace the computer cover and power on your computer.

3. Driver Installation

Follow the steps for the appropriate version of Windows to install the ZyAIR driver.

Windows 98 SE

1. When Windows automatically detects the ZyAIR, click **Next**.
2. Select **Search for the best driver for your device. (Recommended)**, and click **Next**.
3. Insert the Installation CD into your CD-ROM drive. Select **CD-ROM drive** and click **Next**.
4. When prompted, insert the Windows 98 SE CD and click **OK**. Or specify the location of the Windows 98 SE installation files and click **OK**.
5. When **Add New Hardware Wizard** finds the driver file, click **Next**.
6. Click **Finish** and restart the computer when prompted.

Windows Me

1. Windows automatically detects the ZyAIR. Select **Specify the location of the driver (Advanced)**, then click **Next**.

2. Insert the Installation CD into your CD-ROM drive. Select **Search for the best drive for your device** then select only **Removable Media (Floppy, CD-ROM ...)** and click **Next**.
3. When the **Add New Hardware Wizard** finds the driver, click **Next**.
4. Click **Finish** and restart the computer when prompted.

Windows 2000

1. When Windows automatically detects the ZyAIR, click **Next**.
2. Insert the Installation CD into your CD-ROM drive. Select **Search for a suitable driver for my device (recommended)** and click **Next**.
3. Select **CD-ROM drive** and click **Next**.
4. When the **Add New Hardware Wizard** finds the driver, click **Next**.
5. If a **Digital Signature Not Found** window displays, click **Yes** to continue.
6. Click **Finish** to complete the driver installation.

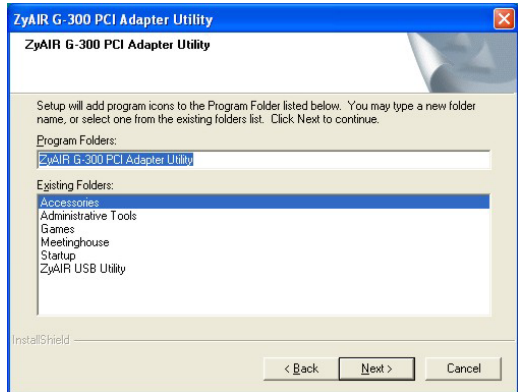
Windows XP

1. Windows automatically detects the ZyAIR. Select **Install from a list or specific location (Advanced)**, then click **Next**.
2. Insert the Installation CD into your CD-ROM drive. Select **Search for the best drive in these locations** then select only **Search removable media. (Floppy, CD-ROM ...)** and click **Next**.
3. If the a warning window displays, click **Continue Anyway**.
4. Click **Finish** to complete the driver installation.

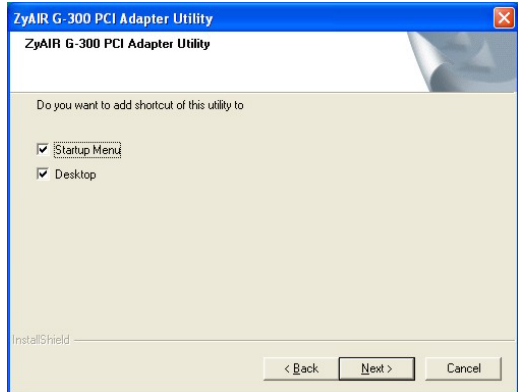
4. ZyAIR Wireless LAN Utility Installation

The installation procedures are similar for all support Windows versions. Windows XP screen shots are shown unless otherwise specified.

1. After you have successfully installed the driver, run **setup.exe** in the **utility** folder in the Installation CD
2. Click **Next** to accept the default file location or click **Browse** to select an alternate folder. A Welcome screen displays, click **Next**.
3. Select a location for the program icon and click **Next**.



4. Select the location(s) to create the ZyAIR Utility shortcut and click **Next**.



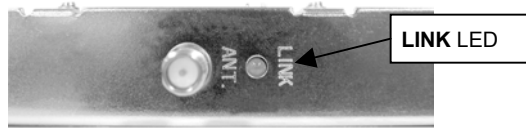
5. When the installation process is complete, click **Finish**.

After you install the ZyAIR Utility and insert the ZyAIR, run the ZyAIR Utility (click **Start**, **(All)Programs**, **ZyAIR G-300 PCI Adapter Utility**).



If the ZyAIR Utility icon displays, the ZyAIR is installed properly. Refer to the *ZyAIR Utility User's Guide* to configure the ZyAIR.

Rear Panel LED Display



The following table describes the LED on the ZyAIR.

COLOR	STATUS	DESCRIPTION
Green	On	The ZyAIR is sending or receiving data.
	Blinking	The ZyAIR is connecting to a wireless LAN.
	Off	The ZyAIR is not receiving power.

Troubleshooting

PROBLEM	CORRECTIVE ACTION
Windows does not auto-detect the ZyAIR.	Make sure the ZyAIR is inserted into the computer PCI slot properly and then restart your computer. Check the LED on the ZyAIR.
	Perform a hardware scan by clicking Start, Settings, Control Panel and double-clicking Add/Remove Hardware . (Steps may vary depending on the version of Windows). Follow the on-screen instructions to search for the ZyAIR and install the driver.

PROBLEM	CORRECTIVE ACTION
	<p>Check for possible hardware conflicts. In Windows, click Start, Settings, Control Panel, System, Hardware and then click Device Manager. Verify the status of the ZyAIR under Network Adapter. (Steps may vary depending on the version of Windows).</p> <p>Install the ZyAIR in another computer. If the error persists, you may have a hardware problem. In this case, you should contact your local vendor.</p>
<p>Cannot start the ZyAIR Wireless LAN Utility.</p>	<p>Make sure the ZyAIR is properly inserted and the LED turns on. Check for possible hardware conflicts. In Windows, click Start, Settings, Control Panel, System, Hardware and then click Device Manager. Verify the status of the ZyAIR under Network Adapter. (Steps may vary depending on the version of Windows).</p> <p>Install the ZyAIR in another computer. If the error persists, you may have a hardware problem. In this case, you should contact your local vendor.</p>