

# *ZyAIR B-320*

*Wireless LAN PCI Adapter*

## *Quick Installation Guide*

Version 1.00

December 2003



# Important Note

## **Federal Communications Commission (FCC) Interference Statement**

To comply with FCC RF exposure compliance requirements, a separation distance of at least 20 cm must be maintained between the antenna of this device and all persons.

This Transmitter must not be co-located or operating in conjunction with any other antenna or transmitter.

Refer to the User's Guide for general FCC statements.

## **Procedure to View a Product's Certification(s)**

1. Go to [www.zyxel.com](http://www.zyxel.com)
2. Select your product from the drop-down list box on the ZyXEL home page to go to that product's page.
3. Select the certification you wish to view from this page.

## **1. Installation Requirements**

Before installation, make sure you have the following requirements.

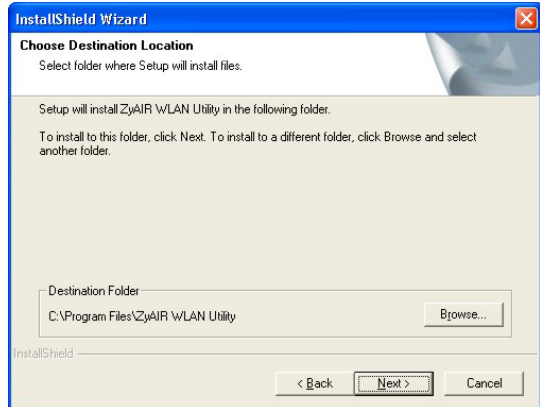
- Pentium II 300MHz or above
- A minimum of 6 MB available hard disk space
- A minimum of 32 MB RAM
- A CD-ROM drive
- A PCI slot
- Windows 98 SE/Me/2000/XP
- Windows 98 SE users may need the Windows 98 SE CD

## 2. ZyAIR Utility and Hardware Installation

The installation procedures are similar for all supported Windows versions. Windows XP screen shots are shown unless otherwise specified.

**DO NOT insert the ZyAIR at this point.**

1. Insert the support CD into the CD-ROM drive on your computer. The CD auto runs. Otherwise, locate and double-click on **setup.exe**. A Welcome screen displays. Click **Next**.
2. Click **Next** to accept the default file location or click **Browse** to select an alternate folder.



3. If a warning window displays, click **Yes** (Windows 2000) or **Continue Anyway** (Windows XP).



4. Windows 2000/XP: Click **Finish** to complete the installation.  
Windows 98 SE/Me: Click **Finish** to restart the computer.
5. Save your work and close all programs.
6. Turn off the computer and peripheral devices, such as the printer. Then disconnect the computer power cord from the power source
7. Ground yourself by wearing an anti-static wrist strap or touching a metal object. Remove the computer cover and a slot cover from a PCI slot.
8. Insert the ZyAIR into an available PCI slot. Make sure the ZyAIR's contacts are fully seated in the slot.
9. Secure the ZyAIR to the chassis with a bracket screw.
10. Attach the included antenna to the ZyAIR. The antenna should be perpendicular to the ground.
11. Replace the computer cover and power on your computer.

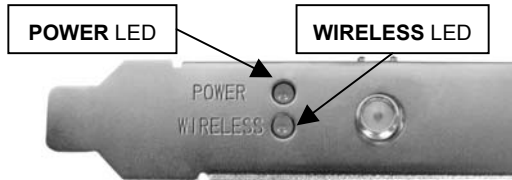
12. Windows 2000: If a warning window displays, click **Yes**.
13. Windows XP: A **Found New Hardware Wizard** windows displays. Select **Install the software automatically (recommended)** and click **Next**.
14. Windows XP: If a warning window displays, click **Continue Anyway**. Then click **Finish** to complete the installation process.

After you install the ZyAIR Utility and insert the ZyAIR, an icon appears in the system tray.



**If the ZyAIR Utility icon displays, the ZyAIR is installed properly. Refer to the *ZyAIR Utility User's Guide* to configure the ZyAIR.**

## LED Display



The following table describes the LEDs on the ZyAIR.

LED	COLOR	STATUS	DESCRIPTION
POWER	Green	On	The ZyAIR is receiving power.
		Off	The ZyAIR is not receiving power.

LED	COLOR	STATUS	DESCRIPTION
WIRELESS	Green	On	The ZyAIR has a connection to a wireless LAN.
		Blinking	The ZyAIR is sending or receiving data.
		Off	The ZyAIR is not connected to a wireless LAN.

## Troubleshooting

PROBLEM	CORRECTIVE ACTION
Windows does not auto-detect the ZyAIR.	Make sure the ZyAIR is inserted into the computer PCI slot properly and then restart your computer. Check the LEDs on the ZyAIR.
	Perform a hardware scan by clicking <b>Start, Settings, Control Panel</b> and double-clicking <b>Add/Remove Hardware</b> . (Steps may vary depending on the version of Windows). Follow the on-screen instructions to search for the ZyAIR and install the driver.
	Check for possible hardware conflicts. In Windows, click <b>Start, Settings, Control Panel, System, Hardware</b> and then click <b>Device Manager</b> . Verify the status of the ZyAIR under <b>Network Adapter</b> . (Steps may vary depending on the version of Windows).
	Install the ZyAIR in another computer. If the error persists, you may have a hardware problem. In this case, you should contact your local vendor.