

Vantage Report

Quick Start Guide

Version 2.2
7/2005

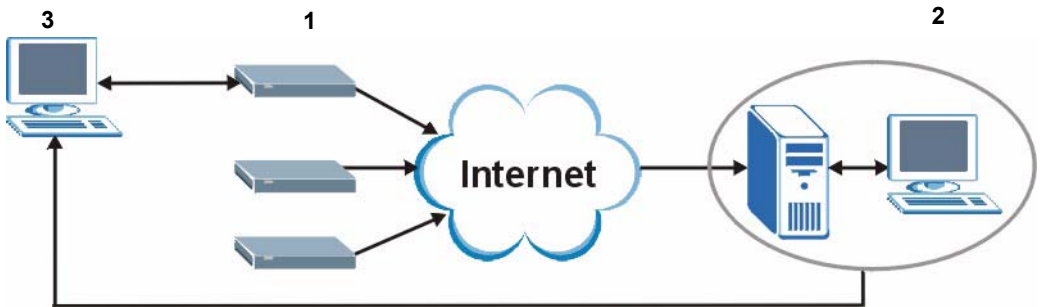
The logo for ZyXEL, featuring the word "ZyXEL" in a bold, blue, sans-serif font. The "y" is lowercase and has a distinctive shape, while "XEL" is uppercase. The letters are closely spaced and have a slight shadow effect.

Overview

Vantage Report is an application that collects and analyzes logs sent by ZyXEL devices to the Vantage Report syslog server. See the User's Guide for more information.

The following figure shows what you can do with Vantage Report

- 1 The ZyXEL device sends logs to the Vantage Report server.
- 2 The logs are used in Vantage Report to build statistical reports.
- 3 Vantage Report sends reports to clients who have requested them.



This Quick Start Guide shows you:

- 1 Requirements
- 2 Vantage Report Installation Procedure
- 3 Starting and Stopping Vantage Report
- 4 Sending and Receiving Vantage Reports
- 5 Uninstalling Vantage Report
- 6 Viewing Your Product's Certifications

1 Requirements

1.1 Vantage Report Administrator

CPU	Pentium IV 2.6 GHz or faster recommended
RAM	1024 MB or more
Hard Disk	80 GB or more
Operating System	Microsoft Windows 2000 Server/ Windows XP Professional
Browser	Internet Explorer 6.0 (Service Pack 1) or above with 1024*768 resolution

1.2 ZyXEL Device Support for Vantage Report

The following devices can send logs to the Vantage Report server.

Partial Support (Some Reports)

- ZyWALL 2 version 3.62
- ZyWALL 5 version 3.62
- ZyWALL 35 version 3.62
- ZyWALL 70 version 3.62
- ZyWALL IDP 10 version 2.0
- P662HW - 61/63 version 3.40

Full Support (All Reports)

- ZyWALL 5 version 3.64
- ZyWALL 35 version 3.63 and above
- ZyWALL 70 version 3.63 and above

2 Vantage Report Installation Procedure

Use the Vantage installation wizard to install Vantage Report software.

In each wizard screen, click **Next** to proceed to the next screen in the wizard, click **Back** to return to the previous screen or click **Cancel** to abort the installation and exit the wizard.

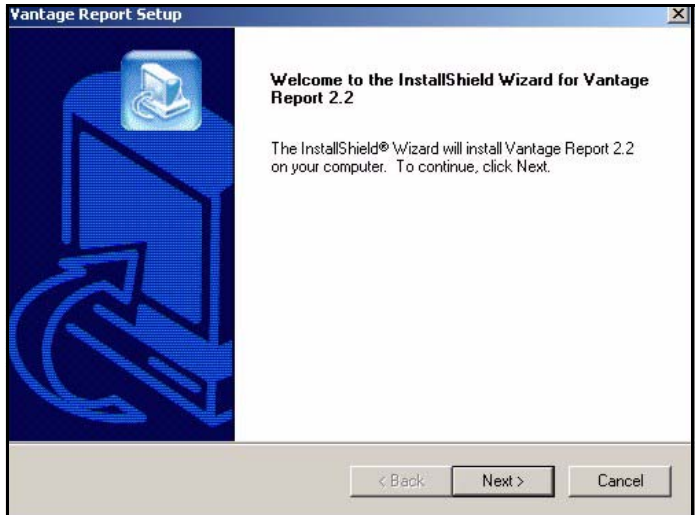
You should prepare an SMTP server IP address and login name/password. You can add this server's details during the wizard installation or after you install Vantage Report in the **System > Server Config** screen.

Note: This software installs a Kiwi Syslog server and a MySQL server to the computer from which you run Vantage Report server. If the computer already has a Kiwi Syslog server or MySQL server installed, backup any existing databases before the installation or install the Vantage Report software on another computer.

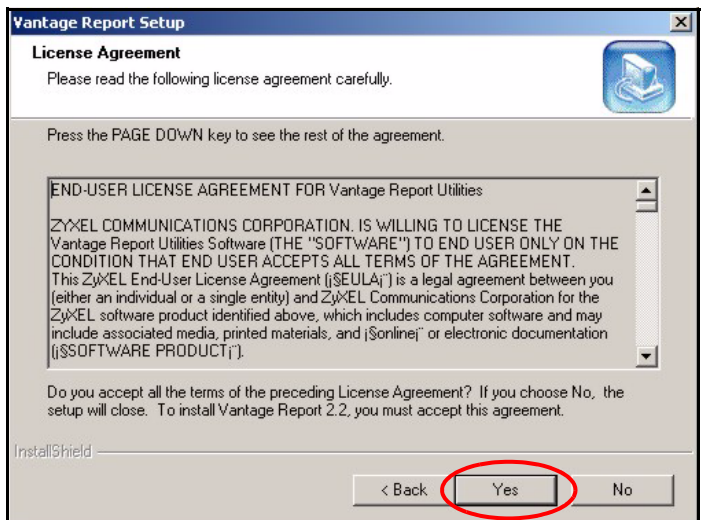
2.1 Installation Wizard

You should uninstall any previous versions of Vantage before beginning.

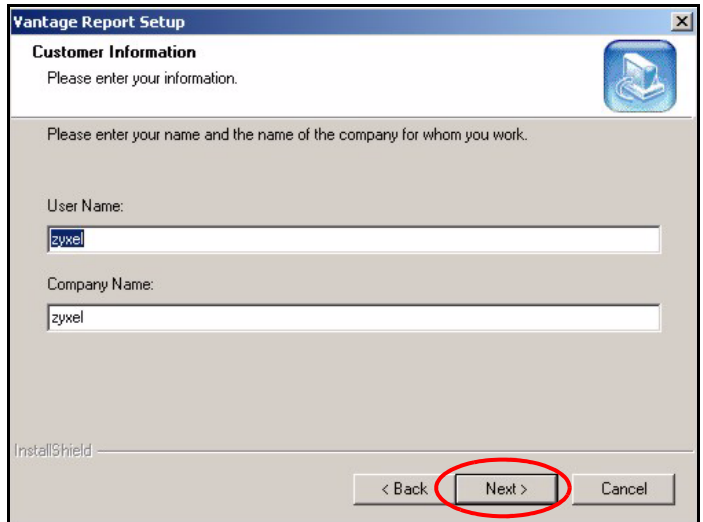
- 1 Insert the CD into your CD-ROM. Click Vantage Report to start the installation wizard. The following screen displays.



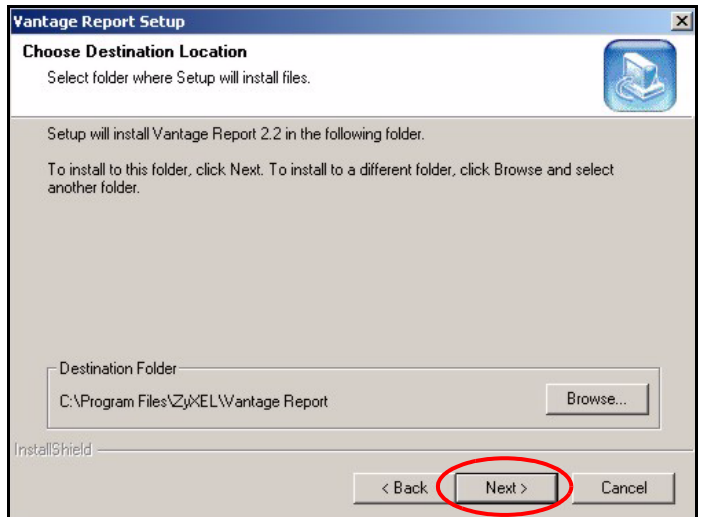
- 2 Read the license agreement and click **Yes** if you agree.



- 3 Enter a user name and specify the name of your company.



- 4 Choose where you want to install the software.



- 5 The next screen asks you to configure a mail server. The mail server is used to send notifications. Type the IP address or domain name of the mail server. Type the e-mail address that you want to send Vantage reports.

Vantage Report Setup

Config SMTP

Please input SMTP Address and SendEmail

SMTP

Send Email

InstallShield

< Back **Next >** Cancel

- 6 Configure the user name and password of the mail server if it requires authentication.

Vantage Report Setup

Config SMTP

Please input SMTP User Name and Password

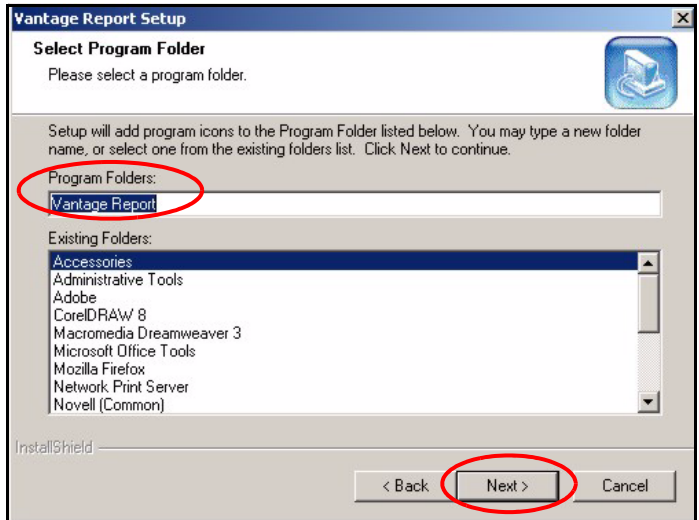
User Name

Password

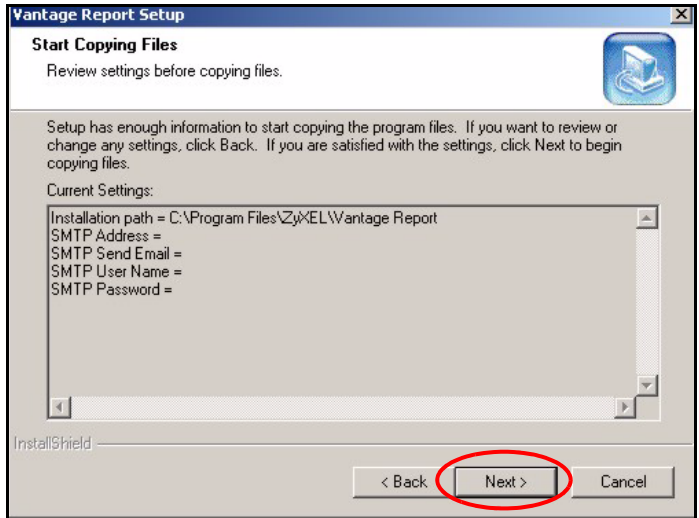
InstallShield

< Back **Next >** Cancel

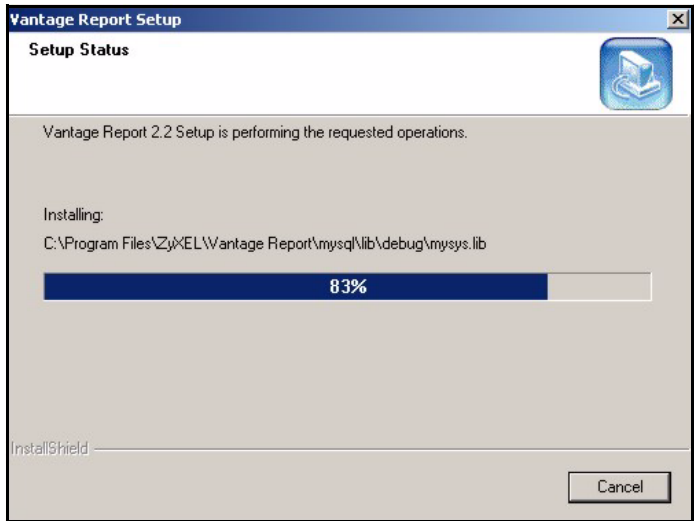
- 7 Enter the name for a new folder or choose an existing folder to use.



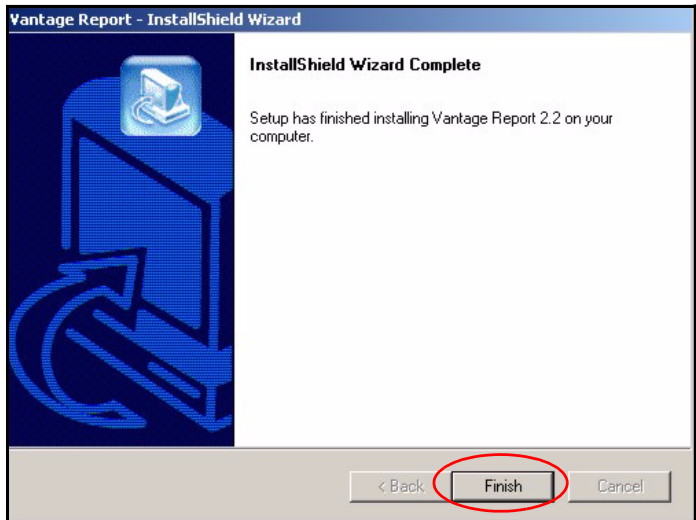
- 8 Click **Next** if your settings are appropriate (otherwise click **Back**).



- 9 Wait for the wizard to install Vantage Report.



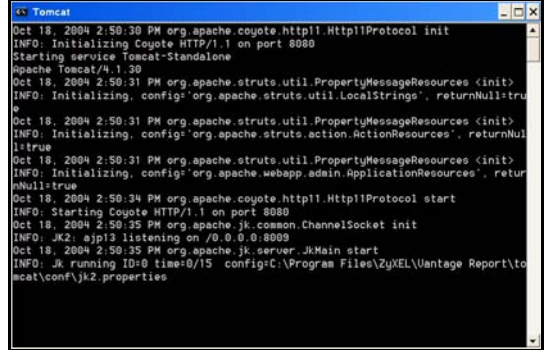
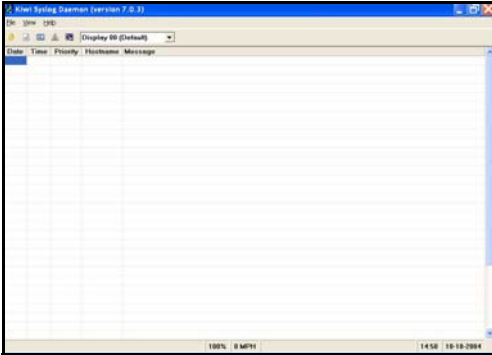
- 10 Click **Finish** to complete your installation. It is recommended you restart your computer.



Vantage Report has installed successfully when you then see the next screen. It is recommended you restart your computer.

3 Starting Vantage Report

- 1 Stop other syslog, MySQL, and web services before starting Vantage Report.
- 2 Double click the desktop icon that was created when you installed Vantage Report.
- 3 The Kiwi Syslog Daemon and ApacheTomcat open.



- 4 Open a browser window and enter <http://localhost:8080/vrpt> in the address bar to open the login screen.

Enter root as the user name and the password and click **OK** to open the Vantage Report main screen.



4 Sending and Receiving Vantage Reports

This section shows you how to configure a ZyXEL device to send logs to the syslog server. The syslog server then sends the logs to Vantage Report. Use either the web configurator or command interface (see the ZyXEL device User's Guide for access information) to activate the syslog server.

Note: If both the web configurator and the command interface are configured, the latest settings configured apply.

4.1 Web Configurator

In the ZyXEL device main screen click **LOGS** and then select the **Log Settings** tab.

- 1 Configure the **E-mail Log Settings** section if you want logs and alert messages to be sent via e-mail.

In **Syslog Logging**:

- 2 Select the **Active** checkbox.
- 3 Type the IP address or name of the Vantage Report server computer in the **Syslog Server** field.

In **Active Log and Alert** select the logs that you want Vantage Report to receive from the ZyXEL device:

In **Log Consolidation**:

- 4 Select the **Active** check box to merge logs with identical messages into one log. Some logs (such as the Attacks logs) may be so numerous that it becomes easy to ignore other important log messages.

You can use the **sys log consolidate msglist** command to see what log messages will be consolidated.

- 5 In the **Consolidation Period** field specify the time interval during which the ZyXEL device merges logs with identical messages into one log.

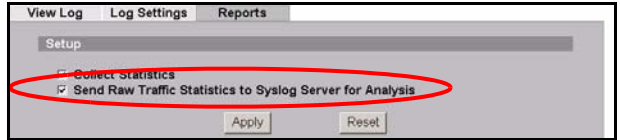
The screenshot displays the 'Log Settings' tab in the ZyXEL Vantage Report web configurator. It is divided into several sections:

- E-mail Log Settings:** Includes fields for Mail Server (webmail.zyxel.com.tw), Mail Subject (CPEPM2-5617-ZW70), Send Log to (jacky.liu@zyxel.com.tw), Send Alerts to (jacky.liu@zyxel.com.tw), Log Schedule (When Log is Full), Day for Sending (Sunday), Time for Sending (0 Hour, 0 Minute), SMTP Authentication (checked), User Name (jacky.liu), and Password (*****).
- Syslog Logging:** The **Active** checkbox is checked. The Syslog Server field contains '172.23.19.242' and the Log Facility is set to 'Local 1'. This section is circled in red.
- Active Log and Alert:** A list of log categories with checkboxes. Under 'Log', System Maintenance, System Errors, Access Control, Asymmetrical Routes, Multicasts / Broadcasts, TCP Reset, Packet Filter, ICMP, Remote Management, Call Record, PPP, UPnP, Forward Web Sites, Blocked Web Sites, Blocked Java etc., Attacks, IPsec, IKE, and PKI are all checked. Under 'Send Immediate Alert', System Errors, Access Control, Blocked Web Sites, Blocked Java etc., Attacks, IPsec, IKE, and PKI are all checked.
- Log Consolidation:** The **Active** checkbox is checked. The Log Consolidation Period field is set to '10' seconds. This section is circled in red.

At the bottom, there are 'Apply' and 'Reset' buttons.

In the ZyXEL device main screen click **LOGS** and select the **Reports** tab.

Select the **Send Raw Traffic Statistics to Syslog Server for Analysis** check box and click **Apply** to have the ZyXEL device send unprocessed traffic statistics to the Vantage syslog server for analysis.



Note: You must have the syslog server already configured in the previous **Log Settings** screen.

4.2 Command Lines

In the ZyXEL device command interface you can activate the syslog server and set the server IP address.

Type the commands as displayed in bold.

Note: The address displayed after the **sys logs syslog server** command should be the IP address of the Vantage Report server.

```

ras> sys logs category traffic
Usage: [0:none/1:log] [0:don't show debug type/1:show debug type]
ras> sys logs category traffic 1
ras> sys logs save

ras> sys logs
category    clear        display    errlog
load        mail          save       syslog
consolidate updateSvrIP  switch

ras> sys logs load

ras> sys logs syslog
active      display    facility   server

ras> sys logs syslog server 172.23.19.242
ras> sys logs syslog facility
Usage: [Local ID(1-7)]
ras> sys logs syslog facility 1
ras> sys logs syslog active
Usage: [0:no/1:yes]
ras> sys logs syslog active 1
ras> sys logs syslog display

Active: Yes
Syslog IP Address: 172.23.19.242
Log Facility: Local 1
ras>

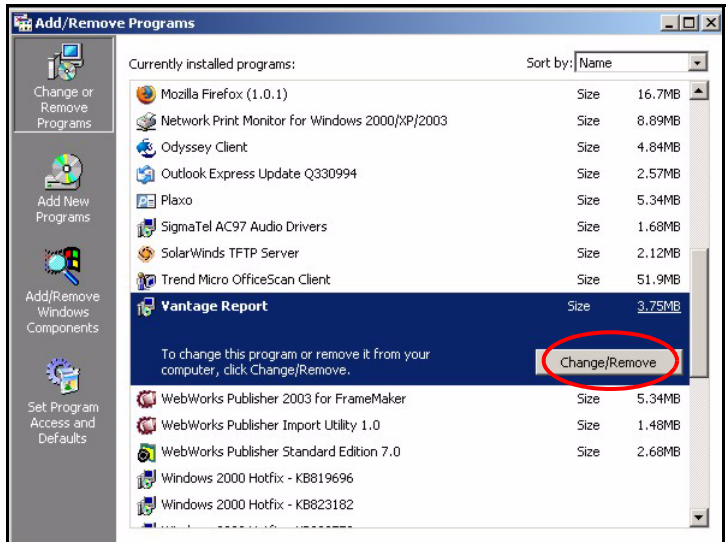
```

5 Uninstalling Vantage Report

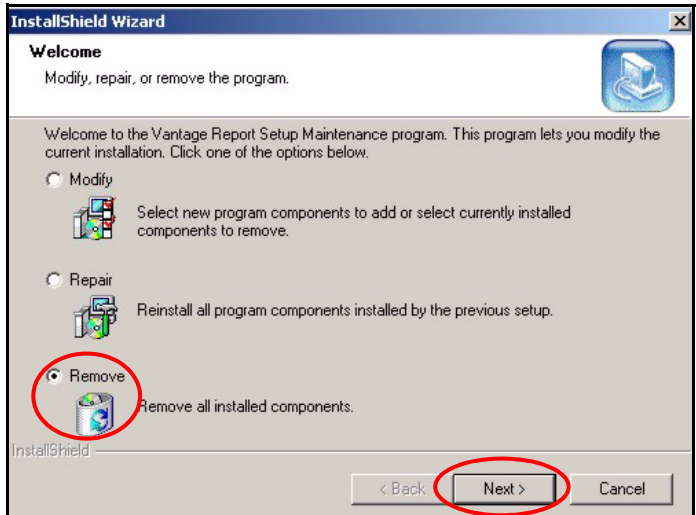
You must uninstall any previous versions of Vantage Report before you install a new version of Vantage Report. Follow this procedure to uninstall Vantage Report.

- 1 You should first stop Vantage by clicking **Logout** in the main screen.

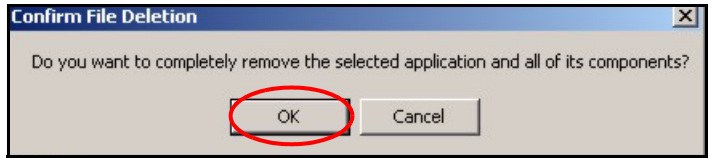
- 2 In Windows, click **start**, **Control Panel**, **Add or Remove Programs**.
Select **Vantage Report** and click **Change/Remove**.



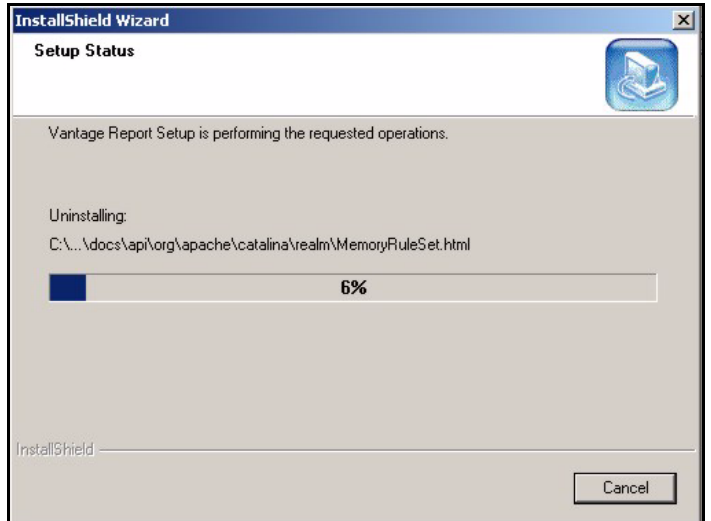
- 3 In the **InstallShield Wizard** screen, select **Remove** and click **Next**.



- 4 Click **OK** to confirm that you want to remove **Vantage Report**.



- 5 This screen displays the status of the program removal.



- 6 This screen displays when Vantage Report has been removed from your computer. Click **Finish**.



6 Viewing Your Product's Certifications

- 1 Go to www.zyxel.com.
- 2 Select your product from the drop-down list box on the ZyXEL home page to go to that product's page.
- 3 Select the certification you wish to view from this page.