

VSG-1000/1200

Vantage Service Gateway



Patterns of business and personal communication have changed dramatically over the past few years. For many people, whether in a local restaurant, an international airport, or a hotel across the country, staying in touch is no longer a luxury but a necessity.

Internet access for travelers previously meant numerous IP reconfiguration processes. With today's increasing demand for High Speed Internet Access (HSIA) in all environments, simple and quick connectivity are becoming key features to any successful multi-user, public access Internet environment.

ZyXEL's VSG-1000/1200 Vantage Service Gateway is specifically designed to meet multi-user needs while minimizing the overall level of support. In addition to greater bandwidth, ZyXEL offers many more features to facilitate new revenue generation.

The VSG-1000/1200 is a 1U high, freestanding or rack-mountable access gateway with a built-in server that authenticates subscribers and authorizes them to access the Internet. Its compact design makes it a perfect solution for installation in small, restrictive locations.

The plug-n-play feature makes Internet access equally simple as accessing the Internet in the office. Whatever network settings a subscriber's workstation may have, the VSG-1000/1200 automatically connects a subscriber to the Internet without having to change any configuration settings.

Additionally, the security support allows telecommuters and other personnel to safely access important or confidential information while traveling. Flexible Authentication, Authorization and Accounting (AAA) give service providers an easy way to manage and maintain a large group of subscribers over the Internet. It also makes global Internet roaming service a possibility.

Portal redirection creates a new space for web-based advertisement and e-commerce such as car rental, local tours reservations, and similar services. Easy integration with an existing billing solution conveniently generates bills while simultaneously creating new revenue stream.

The VSG-1000/1200 offers service providers extensive management capabilities. With the built-in web-based management system, the VSG-1000/1200 offers an easy-to-use, platform-independent management and configuration tool. Simple Network Management Protocol (SNMP) support is another alternative that enables integration with any standard-based management software.

The advanced designs of the VSG-1000/1200 enable service providers to deploy broadband service to a large amount of customers quickly, at a lower cost than previously possible.

B e n e f i t s

Plug-and-Play Connectivity

The VSG-1000/1200 is an access server that recognizes new users on a network and re-routes all the different IP settings pre-configured on users' computers. By re-routing settings such as DHCP, DNS, and Proxy, in addition to a static or private IP, subscribers are able to gain access to the Internet without changing any settings. The VSG-1000/1200 also provides SMTP server re-direction, which helps users to send e-mail via the local SMTP server instead of the predetermined default server.

Secure Protection for Customer Login, Remote Access and Administration

In today's business environment, companies increasingly support VPN (Virtual Private Network) to facilitate secure remote access to local networks. The VSG-1000/1200 allows VPN (PPTP, IPsec and L2TP) traffic pass through, allowing telecommuters and other personnel to safely access important or confidential information while traveling. The VSG-1200 allows secure passing of authentication information through SSL encryption for both web-based administration and user login.

Flexible Authentication, Authorization and Accounting (AAA)

The VSG-1000/1200 supports both RADIUS (Remote Authentication Dial-In User Service) and proprietary implementation to authenticate, authorize and record the Internet usage of customers. The RADIUS support gives service providers an easy way to manage and maintain a large group of subscribers over the Internet, while the built-in authentication server allows an administrator to control and authenticate a subscriber's access rights based on a login name and password. Internet usage can be easily charged by pre-defined billing plans (by either minute, hour, day or other options). With the PMS interface, the VSG-1200 can easily provide information on the Internet usage of different customers to the existing property management system in a hotel application.

Global Roaming Support

Internet mobility has been greatly increased by subscription to roaming service offered by BOINGO, IPASS, GRIC and others. With built-in RADIUS client, the VSG-1000/1200 exchanges AAA information with service providers' server, and thus enables global Internet roaming service.

Easy Configuration and Management

System configuration of the VSG-1000/1200 can be saved and exported to a file that can be used for subsequent re-configuration or configuration of another VSG. The VSG-1000/1200 supports port mapping, which allows system administrators to remotely manage and configure devices with private IP address. The Web-based management interface of the VSG-1000/1200 offers an easy-to-use platform, independent management, and configuration options. The VSG-1200 supports SNMP and MIBs, both of which can be managed via standard-based management software.

Additional Revenue Generation

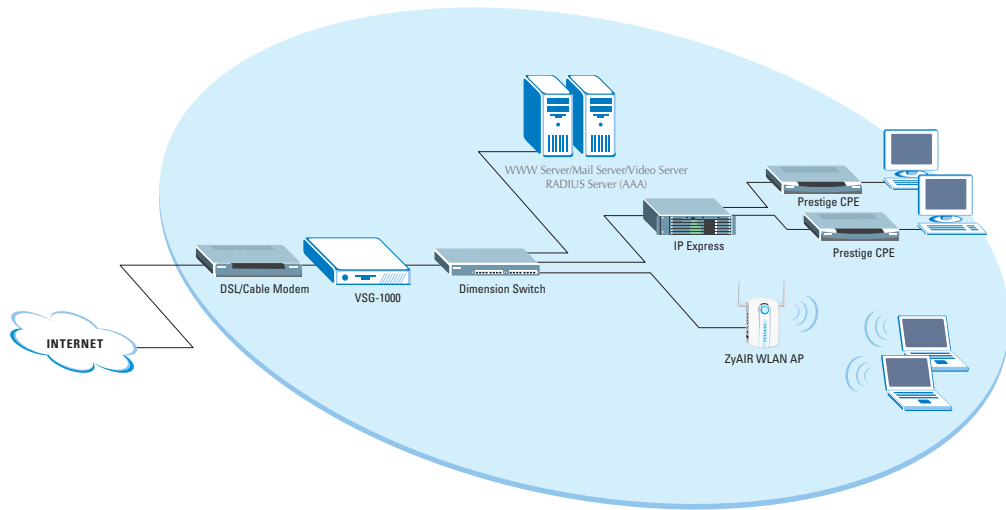
The VSG-1000/1200 offers homepage redirection as well as multiple URL-link redirections for advertising options for service providers, hotels or property owners. The VSG-1000/1200 allows service providers or system administrators to create a "walled garden" where unauthenticated users can be granted free access to selected links.

Features & Specifications

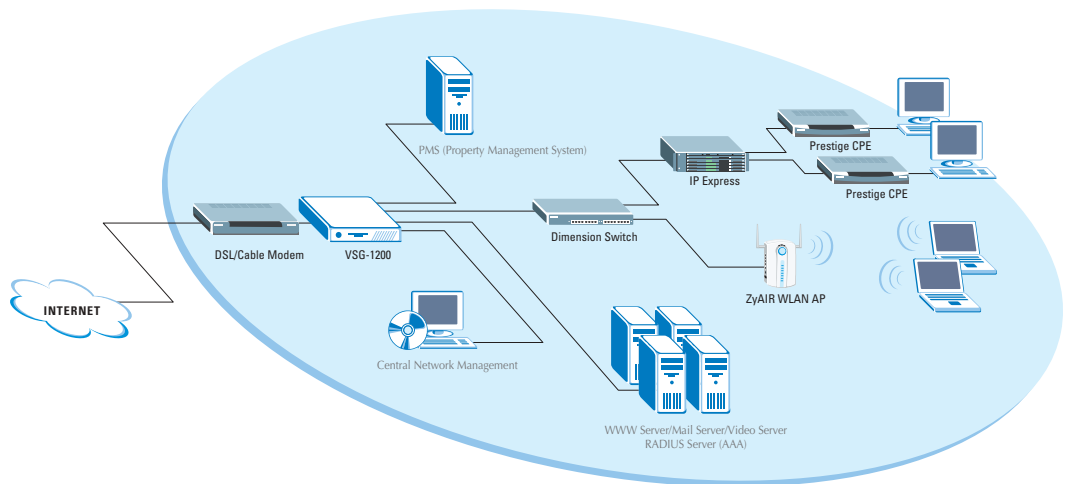
	VSG-1000	VSG-1200
General		
Interface	<ul style="list-style-type: none"> • 1 10/100 Ethernet WAN port • 1 10/100 Ethernet LAN port • 1 RS232 for console 	<ul style="list-style-type: none"> • 1 10/100 Ethernet WAN port • 4 10/100 Ethernet LAN port • 1 RS232 for console • 1 RS232 for PMS • 1 reset button
Networking	<ul style="list-style-type: none"> • plug-n-play • NAT (RFC1631) • DHCP server and DHCP relay • HTTP proxy • SMTP redirection 	
	<ul style="list-style-type: none"> • WAN connections (static IP/DHCP client) 	<ul style="list-style-type: none"> • WAN connections (static IP/DHCP client/PPPoE/PPTP client)
AAA	<ul style="list-style-type: none"> • Web-based authentication • RADIUS AAA • Secondary RADIUS server • Global roaming support • Proprietary authentication and accounting 	
Security	<ul style="list-style-type: none"> • L2 isolation • VPN pass through (IPSec/PPTP/L2TP) • IP/MAC address pass through 	<ul style="list-style-type: none"> • L2 isolation • SSL User Login mechanism • SSL web-based administration • VPN pass through (IPSec/PPTP/L2TP) • IP/MAC/URL address pass through • 802.1x pass through
PMS Support	<ul style="list-style-type: none"> • No 	<ul style="list-style-type: none"> • Micro Fidelio
Other	<ul style="list-style-type: none"> • Walled garden • Advertisement URL link • Home page re-direction • Customized login page 	
Performance & Management		
Max. Throughput	<ul style="list-style-type: none"> • 15.2Mbps 	<ul style="list-style-type: none"> • 30.6Mbps
Concurrent User	<ul style="list-style-type: none"> • 1,024 	<ul style="list-style-type: none"> • 1,024
Management	<ul style="list-style-type: none"> • Web-based management • TFTP firmware upgrade • Remote authorized management • Configuration file import/export • LAN device management 	<ul style="list-style-type: none"> • Web-based management • TFTP firmware upgrade • Remote authorized management • Configuration file import/export • LAN device management • Syslog • SNMP v1/v2 (MIB II)
Physical & Environmental		
LED	<ul style="list-style-type: none"> • Power • WAN/LAN: 100, LK/ACT, FD 	
Dimensions	<ul style="list-style-type: none"> • 440(L) x 116(D) x 44(H) mm 	
Temperature	<ul style="list-style-type: none"> • 0°C ~ 50°C 	
Operational Humidity	<ul style="list-style-type: none"> • 10% ~ 95% (Non-condensing) 	
Power	<ul style="list-style-type: none"> • 100 ~ 220 VAC, 50/60 Hz • Maximum power consumption: 20W 	
Certification	<ul style="list-style-type: none"> • FCC part 15 Class A • VCCI Class A • UL Class A • CE 	

Application Diagram

VSG-1000



VSG-1200



Corporate Headquarters
ZyXEL Communications Co.
 Tel: +886-3-578-3942
 Fax: +886-3-578-2439
 Email: sales@zyxel.com.tw
 http://www.zyxel.com

North America
ZyXEL Communications Inc.
 Tel: +1-800-255-4101
 Email: sales@zyxel.com
 http://www.us.zyxel.com

Germany
ZyXEL Deutschland GmbH.
 Tel: +49 2405 6909 0
 Fax: +49 2405 6909 99
 Email: sales@zyxel.de
 http://www.zyxel.de

Denmark
ZyXEL Communications A/S
 Tel: +45 39 55 07 00
 Fax: +45 39 55 07 07
 Email: sales@zyxel.dk
 http://www.zyxel.dk

Norway
ZyXEL Communications A/S
 Tel: +47 22 80 61 80
 Fax: +47 22 80 61 81
 Email: sales@zyxel.no
 http://www.zyxel.no

Sweden
ZyXEL Communications A/S
 Tel: +46 31 744 7700
 Fax: +46 31 744 7701
 Email: sales@zyxel.se
 http://www.zyxel.se

Finland
ZyXEL Communications Oy
 Tel: +358-9-4780 8400
 Fax: +358-9-4780 8448
 Email: sales@zyxel.fi
 http://www.zyxel.fi