

# Prestige 841 / Prestige 841C

## VDSL Point-to-Point Solution



VDSL, the fastest offering of DSL, provides much higher bandwidth than other DSL technologies. Ethernet over VDSL extends Ethernet over single-pair copper wiring at distances of up to 1.5km. ZyXEL's VDSL point-to-point solution is comprised of the Prestige 841CPE modem and the Prestige 841C central side modem. This solution makes higher bandwidth leased-line application and LAN-to-LAN connectivity simple and easy. New revenue is possible with minimum installation time and expense. It proves to be a promising technology and revenue generation tool for service providers.

### Benefits

#### Bandwidth of 5 to 15Mbps over Existing Telephone Wire

VDSL provides much higher bandwidth than other DSL technologies, and thus enables services providers to offer a variety of value-added services ranging from broadband Internet access to bandwidth-consuming video applications over existing telephone wires.

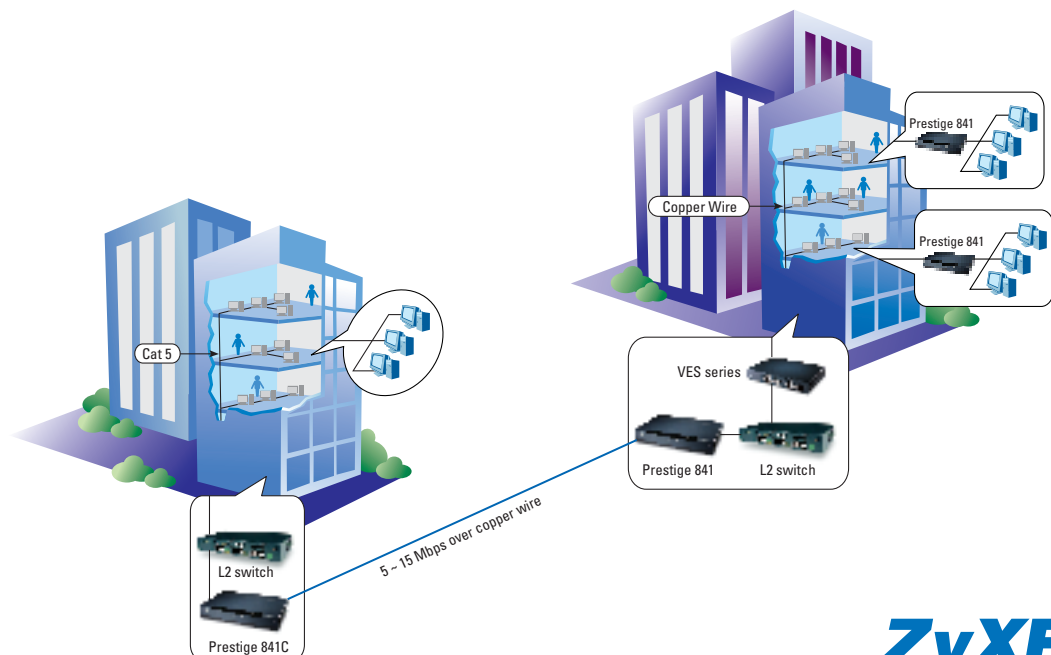
#### Both Symmetric and Asymmetric Applications

The bandwidth could be configured as either symmetric or asymmetric to address the requirements for different applications. Configuration only needs to be done at the Prestige 841C side. The Prestige 841 follows the configuration of the Prestige 841C.

#### Revenue Generation with Minimum Cost

The Prestige 841/Prestige 841C pair allows service providers to offer point-to-point service for, such as building-to-building connection or buildings with very small number of subscribers. New revenue could be generated with minimum installation time and expense.

### Application Diagram



## Features & Specifications

### Dimension

- 181 mm (L) x 128 mm (D) x 30 mm (H)
- Standalone box

### VDSL Interface

- One RJ-11 connector
- Ethernet over VDSL
- Transmission rate: 5, 10, 15Mbps for symmetric/asymmetric
- Power back-off algorithm

### GSTN Interface

- One RJ-11 connector
- POTS/ISDN splitter built-in

### Ethernet Interface

- One 10/100 Ethernet port
- RJ-45 connector

### Console Interface (Prestige 841C only)

- One RS-232C port
- DB-9 connector

### LED and Switch

- Power: Light on & off: System on or off
- VDSL
  - Light on: Link on
  - Light off: link is down or no connection
- Ethernet
  - Green light: 10M Ethernet
  - Orange light: 100M Ethernet
  - Light off: Ethernet not ready or failed
  - Light on: Ethernet link ok; color will indicates if 10 or 100M LAN is on
  - Light flashing: Snd/Rcv
- Power switch: for power on or off

### System Control (Prestige 841)

- Firmware upgrade from Prestige 841C
- Plug and play

### System Control (Prestige 841C)

- Performance monitoring
  - Line rate
- Configuration
  - VDSL line rate setting
- Firmware upgrade from local console
- Rate Adaptation

### Network Protocols

- IEEE 802.3/3u/3x
- Flow control in full duplex mode
- Back pressure in half duplex mode
- Transparent bridging

### Temperature

- Operating: 0 ~ 50°C
- Storage: -25 ~ 70°C

### Humidity

- 10 ~ 90% (non-condensing)

### Power

- 110V or 240VAC, 50 ~ 60Hz

### Certification

- Safety
  - UL1950
  - CSA C22.2 No. 950
  - EN60950, EN41003
  - JATE
- EMC
  - FCC Part 15 Class B
  - VCCI Class B
  - EN55022 Class B

**ZyXEL**  
TOTAL INTERNET ACCESS SOLUTION



**Corporate Headquarters**  
ZyXEL Communications Co.  
Tel: +886-3-578-3942  
Fax: +886-3-578-2439  
Email: sales@zyxel.com.tw  
http://www.zyxel.com

**North America**  
ZyXEL Communications Inc.  
Tel: +1-714-632-0882  
Fax: +1-714-632-0858  
Email: sales@zyxel.com  
http://www.zyxel.com

**Germany**  
ZyXEL Deutschland GmbH.  
Tel: +49 2405 6909 0  
Fax: +49 2405 6909 99  
Email: sales@zyxel.de  
http://www.zyxel.de

**Denmark**  
ZyXEL Communications A/S  
Tel: +45 39 55 07 00  
Fax: +45 39 55 07 07  
Email: sales@zyxel.dk  
http://www.zyxel.dk

**Norway**  
ZyXEL Communications A/S  
Tel: +47 22 80 61 80  
Fax: +47 22 80 61 81  
Email: sales@zyxel.no  
http://www.zyxel.no

**Sweden**  
ZyXEL Communications A/S  
Tel: +46 (0) 31 744 3810  
Fax: +46 (0) 31 744 3811  
Email: sales@zyxel.se  
http://www.zyxel.se