

P-202H Plus v2

ISDN Internet Access Router

Quick Start Guide

Version 3.40
6/2006
Edition 1

The logo for ZyXEL, featuring the word "ZyXEL" in a bold, blue, sans-serif font. The "Zy" is lowercase and the "XEL" is uppercase. The letters are closely spaced and have a slight shadow effect.

Overview

The P-202H Plus v2 is an ISDN router with a four-port built-in switch. It is equipped with two integrated phone ports for connecting analog phones and/or fax devices. It also provides advanced calling features, such as call waiting, three-way calling, call transferring and forwarding.

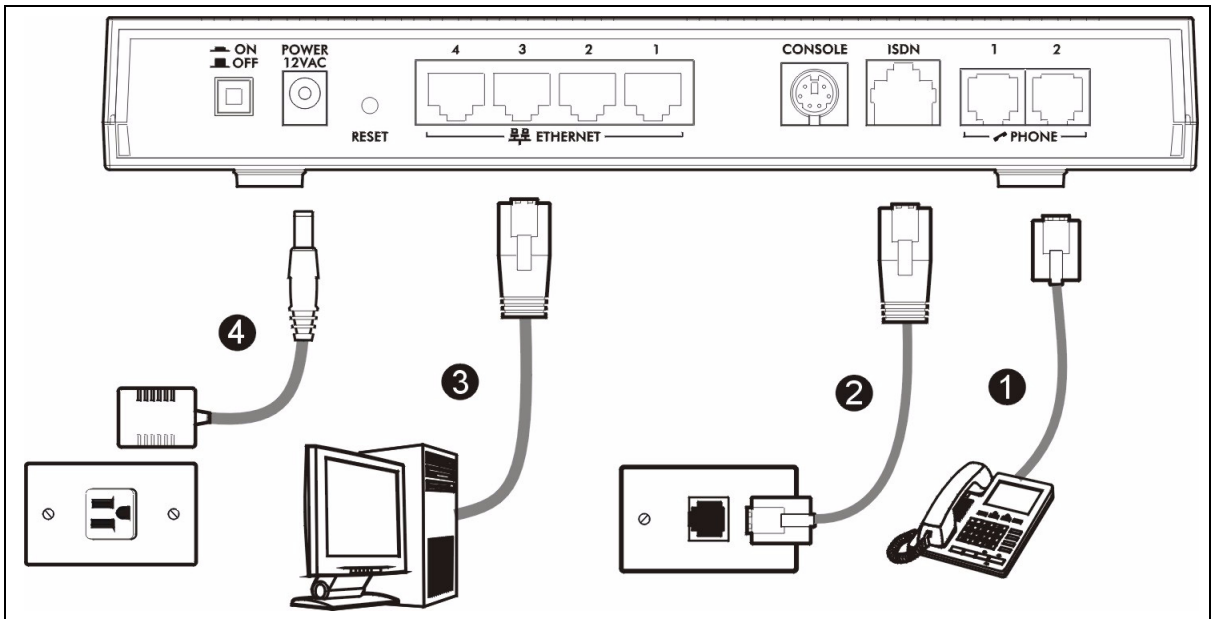
See your User's Guide for background information on all features.

1 Requirements

Make sure you have the following things before you set up your P-202H Plus v2.

- Internet access - account information provided by your ISP, such as user name, password, and so on.
- Internet Explorer 6.0 or later or Netscape Navigator 7.0 or later, with JavaScript enabled.

2 Hardware Connections



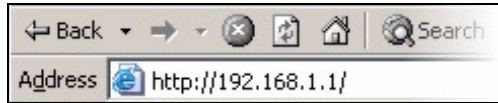
- 1 PHONE 1-2:** Use a telephone cable (and any telephone adaptors provided with your P-202H Plus v2) to connect your telephones to these ports. If you only have one telephone, you should only use one port.
- 2 ISDN:** Use the included ISDN cable to connect your P-202H Plus v2's **ISDN** port to the ISDN wall jack.
- 3 ETHERNET:** Use an Ethernet cable to connect a computer to the **ETHERNET** port for initial configuration and/or Internet access.

- 4 POWER:** Use the power adaptor provided with your P-202H Plus v2 to connect an appropriate power source to this port. Make sure the power source is on.
- 5** Push in the **POWER** button. Look at the LEDs on the front panel.
 - The **POWER** LED blinks while your P-202H Plus v2 starts up and stays on once the system is ready.
 - The **ISDN** and **ETHERNET** LEDs stay on if the corresponding port is properly connected and blinks when there is traffic.

If any of these LEDs are not on, check your connections, and inspect your cables for damage. If the LEDs are still off, contact your local vendor.

3 Initial Configuration

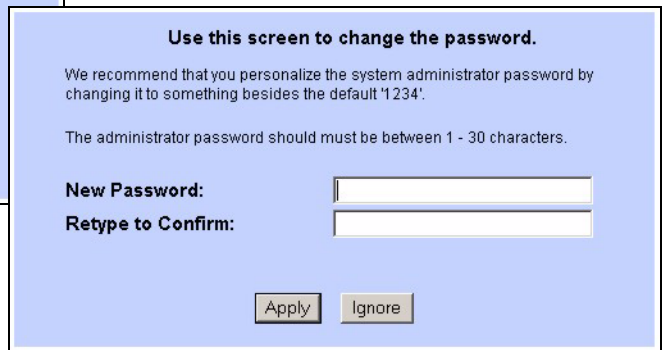
- 1 Open your web browser, and go to <http://192.168.1.1>.



- 2 The login screen displays. Enter the password ("1234" is the default) and click **Login**.

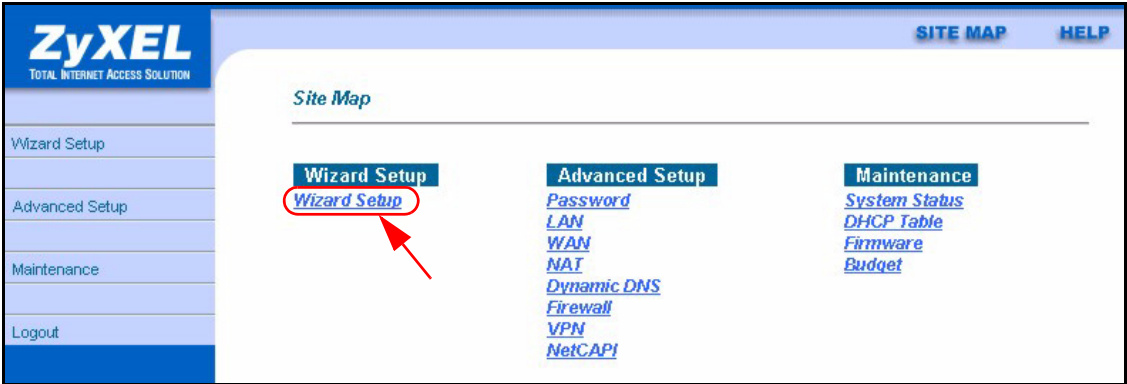
Note: If the login screen does not display, check your browser's security settings (see **Troubleshooting** for details) or make sure your computer is set to receive an IP address dynamically (see [Set Up Your Computer's IP Address](#)).

- 3 Type a new password, re-type it to confirm, and click **Apply**. (The next time you log in, you should not see this screen.)



- 4 You should now see the **Site Map** screen.

- 5 Click **Wizard Setup** in the main menu to display the first wizard screen.



- 6 Use this screen to configure your ISDN line and how the P-202H Plus v2 handles incoming calls.

Select from the **B Channel Usage** dropdown box. If you are using both B channels, select **Switch/Switch** (default). If you are only using one B channel (for example, your router is sharing the ISDN line with another device), then select **Switch/Unused**. If your second B channel is a leased line, select **Switch/Leased**.

In **ISDN Data**, enter the phone number (up to 25 digits) assigned to you by your ISDN service provider. If it's necessary to dial an additional number to reach an outside line, enter it in the **Outside Line Prefix** field.

Enter the subaddress and telephone number assigned to **A/B Adapter 1** or **2** (**PHONE 1** or **2**).

The **Incoming Phone Number Matching** setting governs how incoming calls are routed.

If you select **Multiple Subscriber Number (MSN)** or **Called Party Subaddress**, a call (either ISDN data or analog) is routed to the port that matches the dialed number; if no match is found, the call is dropped. Global calls are always ignored. A global call is an incoming analog call where the switch did not send the dialed number. This happens most often when the call originates from an analog telephone line.

If you select **Don't Care**, then all data calls are routed to the P-202H Plus v2 itself. Analog calls, however, are routed to either A/B adapter 1 or 2, or simply ignored, depending on the **Analog Call Routing** field. If **Incoming Phone Number Matching** is **Don't Care** and **Analog Call Routing** is either **A/B Adapter 1**, **A/B Adapter 2** or **Both**, then the P-202H Plus v2 uses **Global Analog Call** to decide how to handle global calls. If you set **Global Analog Call** to **Accept**, then global calls are routed to the port according to the **Analog Call Routing** setting; if you set **Global Analog Call** to **Ignore**, then the P-202H Plus v2 ignores all global calls. If **Analog Call Routing** is **Ignore** to begin with, then all analog calls, including global calls, are ignored.

Click **Next** to continue.

- The second wizard screen helps you set up your P-202H Plus v2 for Internet access.

In the **Service Name** field, enter your ISP's name. Enter the **Primary** and the **Secondary Phone** numbers to connect to the ISP. Next, enter the user name and password exactly as your ISP assigned them.

Select **Obtain an IP Address Automatically** if you have a dynamic IP address; otherwise select **Static IP Address** and type your ISP assigned IP address in the text box below.

Choose the type of Network Address Translation (NAT) you need. Select **Full Feature** if you have multiple public WAN IP addresses for your P-202H Plus v2.

Select **SUA Only** if you have just one public WAN IP address for your P-202H Plus v2. Select **None** to disable NAT.

Note: When you select **Full Feature** you must configure at least one address mapping set. For more information about NAT and the choices listed refer to your User's Guide.

Wizard Setup - ISP Parameters for Internet Access

Name

Login Information

Primary Phone #

Secondary Phone #

User Name

Password

IP Address

Obtain an IP Address Automatically

Static IP Address

IP Address

Network Address Translation

Dial out Channel Setting

Transfer Type

Multilink

Connection

Max Idle Timeout Secs

In the **Transfer Type** drop-down list box, choose the type of connection between the router and this remote node. Select **64K**, or **Leased**. If you selected **64K**, select the way you use the PPP **Multilink** protocol. You can either select not to (**Off**) or always (**Always**) to bundle multiple links in a single connection to boost the effective throughput between two nodes. Otherwise, select **BOD** (Bandwidth on Demand) to add or subtract links dynamically according to traffic demand.

In the **Max Idle Timeout** field, enter the amount of time (in seconds) after which you want the connection to timeout if the line remains consistently idle.

Click **Next**.

- Verify the settings in the screen. To change the LAN information on the P-202H Plus v2, click **Change LAN Configuration**. Otherwise click **Save Settings** to save the configuration and skip to step 10.

Wizard Setup - ISP Parameters for Internet Access

ISDN Information:
 B Channel Usage: **Switch/Switch**
 ISDN Data :
 Outside Line Prefix:

WAN Information:
 Name : **ChangeMe**
 Primary Phone # : **1234**
 Secondary Phone #:
 User Name : **ChangeMe**
 Password : *********
 IP Address: **Obtain an IP Address Automatically**
 Network Address Translation: **SUA Only**
 Transfer Type: **64K**
 Multilink: **Off**
 Connect on Demand: **Max Idle Timeout 100 Secs.**

LAN Information:
 IP Address: **192.168.1.1**
 IP Mask: **255.255.255.0**
 DHCP: **ON**
 Client IP Pool Starting Address: **192.168.1.33**
 Size of Client IP Pool: **6**

- Enter the LAN IP address of your P-202H Plus v2 in dotted decimal notation in the **LAN IP Address** field. For example, 192.168.1.1 (factory default). Enter a subnet mask in dotted decimal notation in the **LAN Subnet Mask** field.

Note: If you change the P-202H Plus v2's LAN IP address, you must use the new IP address if you want to access the web configurator again.

From the **DHCP Server** drop-down list box, select **On** to allow your P-202H Plus v2 to assign IP addresses, an IP default gateway and DNS servers to computer systems that support the DHCP client. Select **Off** to disable DHCP server.

When DHCP server is used, set the following items:

Wizard Setup - ISP Parameters for Internet Access

TCP/IP

LAN IP Address

LAN Subnet Mask

DHCP

DHCP Server

Client IP Pool Starting Address

Size of Client IP Pool

Primary DNS Server

Secondary DNS Server

Specify the first of the contiguous addresses in the IP address pool in the **Client IP Pool Starting Address** field. Specify the size or count of the IP address pool in the **Size of Client IP Pool** field. Enter the IP address(es) of the DNS server(s) in the **Primary DNS Server** and/or **Secondary DNS Server** fields.

Click **Finish**.

- 10** The P-202H Plus v2 automatically tests the connection to the computer(s) connected to the LAN ports. To test the WAN connection from the P-202H Plus v2 to the ISP, click **Start Diagnose**. Otherwise click **Return to Main Menu** to go back to the **Site Map** screen.

Wizard Setup - ISP Parameters for Internet Access

Your DSL Gateway is now configured. Your device is capable of testing your DSL service. The individual tests are listed below. Click "Start Diagnose" button if you want to test; otherwise, click "Return to Main Menu" button.

| | | |
|------------------------|-------------------------------|-------------|
| LAN connections | | |
| | Test your Ethernet Connection | PASS |
| WAN connections | | |
| | Test ISDN loopback test | N/A |

Start Diagnose
Return to Main Menu

Troubleshooting

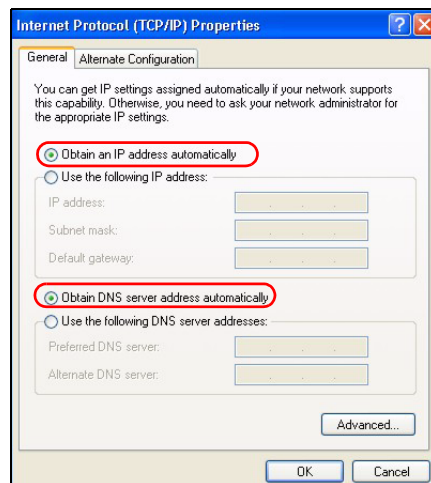
- 1** If you cannot access the web configurator using Internet Explorer in Windows XP or Windows Server 2003, make sure you allow pop-up windows, JavaScripts and Java permissions or set the Internet security level lower than **High** in Internet Explorer (in Internet Explorer, click **Tools > Internet Options > Security > Custom Level...**). See the appendix in the User's Guide for more information.
- 2** If you cannot access the Internet when your computer is connected to the **LAN** port, follow these steps.
 - A)** Check the LEDs on the front panel. If they are different than what is described in section 2, make sure the connections are correct. (See section 2.) If the LEDs are still different, turn off the device, wait a few seconds, and turn it on again.
 - B)** Follow the steps in section 3 again. Make sure you enter the correct information. For example, make sure you type the user name and password correctly. The user name and password are case sensitive.
 - C)** If you are using a new Internet account, contact your ISP to make sure it is active.
 - D)** If you still have problems, see **Troubleshooting** in the User's Guide.

Set Up Your Computer's IP Address

This section shows you how to set your Windows NT/2000/XP computer to automatically get an IP address. This ensures that your computer can communicate with your P-202H Plus v2. Refer to your User's Guide for detailed IP address configuration for other Windows and Macintosh computer operating systems.

- 1** In Windows XP, click **start, Control Panel**. In Windows 2000/NT, click **Start, Settings, Control Panel**.
- 2** In Windows XP, click **Network Connections**. In Windows 2000/NT, click **Network and Dial-up Connections**.

- 3 Right-click **Local Area Connection** and then click **Properties**.
- 4 Select **Internet Protocol (TCP/IP)** (under the **General** tab in Win XP) and click **Properties**.
- 5 The **Internet Protocol TCP/IP Properties** screen opens (the **General** tab in Windows XP).
- 6 Select the **Obtain an IP address automatically** and **Obtain DNS server address automatically** options.
- 7 Click **OK** to close the **Internet Protocol (TCP/IP) Properties** window.
- 8 Click **Close (OK** in Windows 2000/NT) to close the **Local Area Connection Properties** window.
- 9 Close the **Network Connections** screen.



Viewing Your Product's Certifications

- 1 Go to <http://www.zyxel.com>.
- 2 Select your product from the drop-down list box on the ZyXEL home page to go to that product's page.
- 3 Select the certification you wish to view from this page.