
G-470

802.11g Wireless Ethernet Adapter

Quick Start Guide

Version 1.00
Edition 1
5/2006

ZyXEL

About Your G-470

The G-470 is a wireless network adapter for your computer. It allows your computer to connect to a wireless access point (AP).

Installation Requirements

Before installation, make sure you have a computer with the following:

- A Local Area Network (LAN) Ethernet port.
- Windows NT 4.0, Windows 98SE, Windows ME, Windows 2000 or Windows XP.
- Windows 98 SE users may need the Windows 98 SE CD.

Hardware Connections

Figure 1 The G-470: Rear Panel



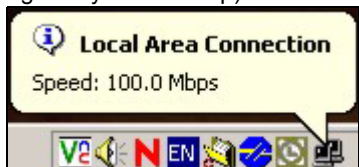
The following table describes the rear panel of the G-470.

Label	Description
1	Antenna connector
2	RESET button
3	ETHERNET port
4	POWER socket

Follow the steps below to install the G-470 in your computer.

- 1 Screw the antenna clockwise onto the antenna connector. Make sure the antenna is securely screwed onto the antenna connector.
- 2 Use an Ethernet network cable to connect your computer to the **ETHERNET** port for Internet access.
- 3 Use the power adaptor provided with your G-470 to connect an appropriate power source to the **POWER** socket. Make sure the power source is on. Use only the included power adaptor.

If the G-470 is properly connected, an icon similar to the following will appear in the system tray (typically at the bottom right of your desktop).



After you make the proper hardware connections, check the lights on the front of the G-470.

Figure 2 The G-470: Front Panel



The following table describes the front panel of the G-470.

Light		Description
SGNL		The blinking frequency of the SGNL light indicates the quality of the wireless signal.
	The light is steady on.	Signal strength is 80% or more.
	The light is blinking once a second.	Signal strength is between 60% and 79%.
	The light is blinking twice a second.	Signal strength is between 30% and 59%.
	The light is blinking four times a second.	Signal strength is below 29%.
	The light is off.	The wireless network is not connected.

Light		Description
WLAN	The light is on.	The device is connected to the wireless network.
	The light is blinking.	The device is scanning for an access point (AP).
	The light is off.	The device is not connected to the wireless network.
ETHN	The light is on.	Ethernet is connected.
	The light is blinking	Ethernet is connected, and is sending or receiving data.
	The light is off.	Ethernet is not connected.
SYS	The light is off.	The device is ready.
	The light is blinking orange.	The device is not ready, or is rebooting.
PWR	The light is on.	The power is on.
	The light is off.	The power is off.

If any of these lights are not on, check your connections and inspect your cables for damage. If the lights are still off, contact your local vendor.

Internet Setup

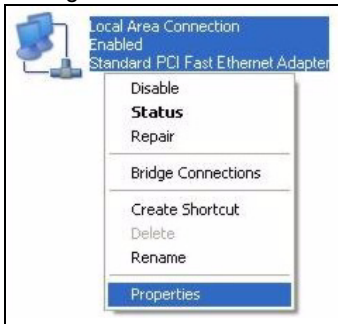
You must first prepare your computer / computer network to connect to the G-470 by setting up your IP address.

- 1 Click **start (Start in Windows 2000/NT) > Settings > Control Panel.**

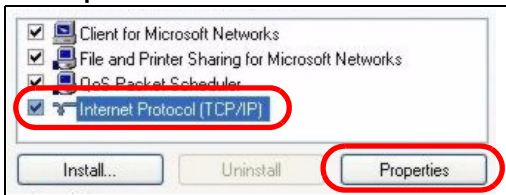
2 In the **Control Panel**, double-click **Network Connections** (**Network and Dial-up Connections** in Windows 2000/NT).



3 Right-click **Local Area Connection** and then **Properties**.



4 Select **Internet Protocol (TCP/IP)** and then click **Properties**.



5 Select **Use the following IP Address** and fill in an **IP address** (between 192.168.1.12 and 192.168.1.254).

6 Type 255.255.255.0 as the **Subnet mask**.

7 If your Internet Service Provider (ISP) gave you Domain Name System (DNS) settings, enter them in the **Use the following DNS server addresses** fields. A DNS server translates domain names (e.g. <http://www.zyxel.com>) into the IP addresses your Internet browser uses to navigate the web (e.g. 203.160.232.7). If you are not sure of your DNS settings, contact your ISP.

8 Click **Advanced**.

The screenshot shows the 'Internet Protocol (TCP/IP) Properties' dialog box. The 'Use the following IP address' radio button is selected. The IP address field contains '192.168.1.15', the Subnet mask field contains '255.255.255.0', and the Default gateway field is empty. Below this, the 'Use the following DNS server addresses' radio button is also selected, with empty fields for Preferred and Alternate DNS servers. The 'Advanced...' button is located at the bottom right of the dialog box.

9 Remove any previously installed gateways in the **IP Settings** tab and click **OK** to go back to the **Internet Protocol TCP/IP Properties** screen.

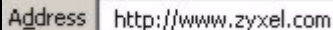
10 Click **OK** to close the **Internet Protocol (TCP/IP) Properties** window.

11 Click **Close (OK in Windows 2000/NT)** to close the **Local Area Connection Properties** window.

Close the **Network Connections** window (**Network and Dial-up Connections** in Windows 2000/NT).

Configuration

Open your Internet browser and enter the URL of a web site in the address bar.

A screenshot of a browser's address bar. The text 'Address' is on the left, and 'http://www.zyxel.com' is entered in the input field on the right.

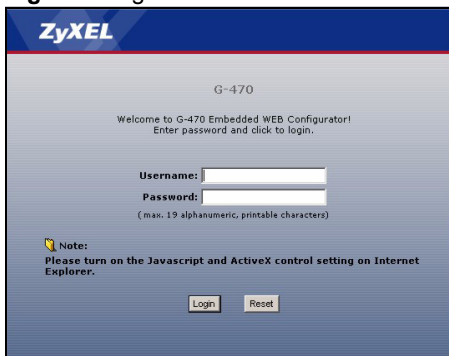
Your G-470 automatically searches for wireless networks. This may take a few minutes. If any other screens appear, follow the directions in the screens.

If the web page opens correctly, your G-470 is ready to use.

If the web page does not open, you need to set up your Internet connection. You should have information supplied by your Internet Service Provider.

In your browser enter 192.168.1.11 (default) as the URL and press ENTER. The G-470 Web Configurator login screen displays as shown.

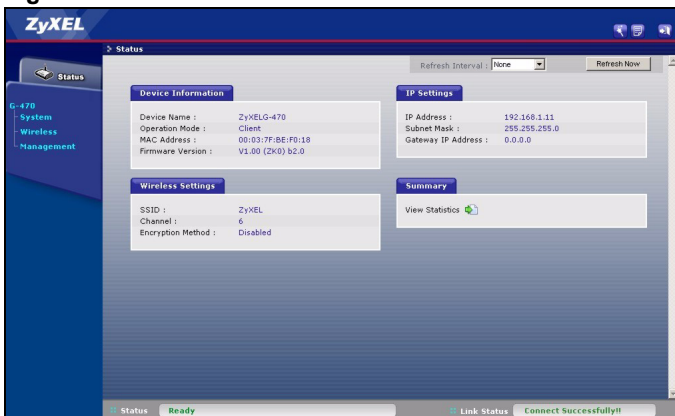
Figure 3 Login Screen



The image shows the login screen for the ZyXEL G-470 Embedded WEB Configurator. At the top left is the ZyXEL logo. The page title is "G-470". Below the title, it says "Welcome to G-470 Embedded WEB Configurator! Enter password and click to login." There are two input fields: "Username:" and "Password:". Below the password field, it says "(max. 19 alphanumeric, printable characters)". There is a "Note:" section with a yellow warning icon, stating "Please turn on the Javascript and ActiveX control setting on Internet Explorer." At the bottom, there are two buttons: "Login" and "Reset".

Type **admin** (default) as the username and **1234** (default) as the password and click **OK**. The **Status** screen appears.

Figure 4 Status Screen



This screen shows the current configuration of your G-470. You can access this screen at any time while in the Web Configurator by clicking on the **Status** icon.



Click on the **Wizard** icon in the top right of the **Status** screen.



Follow the instructions in the wizard to set up your Internet connection. Enter your Internet access information exactly as it was given to you.

To access the Internet, open your Internet browser and enter the URL of a web site in the address bar.

Address	http://www.zyxel.com
---------	---

For more information on Internet and wireless setup, refer to the User's Guide.

Troubleshooting

If the lights on the G-470 are not on after you have connected the Ethernet network cable and the power cable, or the lights are on but your computer does not detect the LAN connection:

- Check your cables and connections.
- If the problem persists, unplug the power source, wait a few seconds and try again.

If your computer detects the LAN connection but you cannot access the Internet in your browser:

- Check the **SGNL** light on the G-470 to make sure that it has detected a wireless access point (AP).
- If the device has not detected an AP, try moving the G-470 away from thick walls and other devices that may be causing signal interference (microwave ovens, wireless phones, Bluetooth devices, etc.)

If your G-470 has detected an access point (AP) but you cannot access the Internet in your browser:

-
- Go to the G-470 Web Configurator in your Internet browser (see **Internet Setup**) and run the Internet Setup Wizard.
 - If you are using a new Internet account, contact your ISP to make sure it is active.
 - If you still have problems, refer to the User's Guide for information on changing your wireless settings or contact your local vendor.

If you cannot access the Web Configurator using Internet Explorer in Windows XP or Windows Server 2003:

- Make sure you allow pop-up windows, JavaScripts and Java permissions or set the Internet security level lower than **High** in Internet Explorer (In Internet Explorer, click **Tools > Internet Options > Security > Custom Level...**).

Important Information

Federal Communications Commission (FCC) Interference Statement

The 802.11g Wireless LAN Adapter has been tested to the FCC exposure requirements (Specific Absorption Rate).

The equipment complies with FCC RF radiation exposure limits set forth for an uncontrolled environment, under 47 CFR 2.1093 paragraph (d) (2).

This Transmitter must not be co-located or operating in conjunction with any other antenna or transmitter.

Refer to the User's Guide for general FCC statements.

Procedure to View a Product's Certification(s)

- 1** Go to www.zyxel.com
- 2** Select your product from the drop-down list box on the ZyXEL home page to go to that product's page.
- 3** Select the certification you wish to view from this page.