

# **ZyAIR B-200 11Mbps Wireless LAN USB Network Adapter**

## *Quick Installation Guide*

Version: 1.0



**ZyAIR B-200**

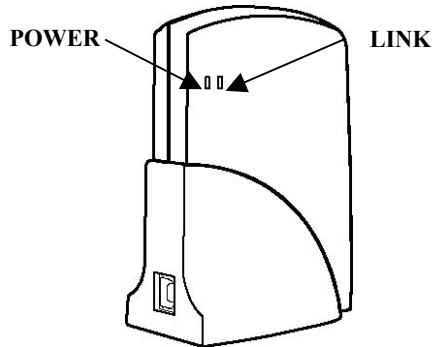
### **Package Contents**

Please ensure that the following items are included in your package. If any items are missing contact your dealer.

- USB Adapter
- USB cable
- CD-ROM (includes device drivers, utility and user's manual)
- This quick installation guide

## ZyAIR B-200 Quick Installation Guide

### Status LEDs



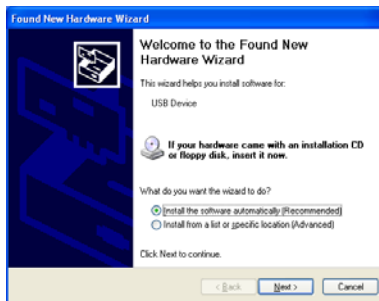
| <b>LED</b>   | <b>MEANING</b>  |
|--------------|---|
| <b>POWER</b> | Indicates that the B-200 is powered on (solid green). |

## ZyAIR B-200 Quick Installation Guide

|             |   |
|-------------|---|
| <b>LINK</b> | Indicates link status. The LED lights up (solid green) while the wireless connection is linked. If the LED is blinking green, the B-200 is searching for possible wireless connections. |
|-------------|---|

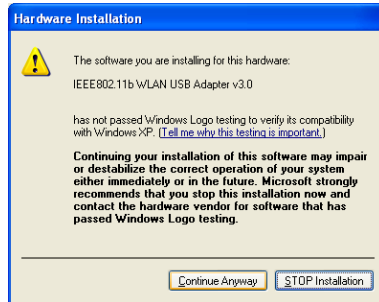
### Driver installation for Windows XP

1. Connect the B-200 Wireless Network Adapter to the USB port of a notebook or desktop PC.
2. After Windows XP detects the B-200, the *Found New Hardware Wizard* window appears. Select **Install the software automatically [Recommended]** and insert the driver CD-ROM into CD-ROM drive and click **Next** to continue.



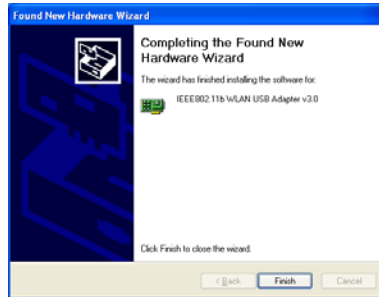
## ***ZyAIR B-200 Quick Installation Guide***

3. The next screen is the common Windows Logo testing warning screen. This testing is not necessary for the operation of the ZyAIR B-200. Simply click **Continue Anyway** to continue the installation.



## ZyAIR B-200 Quick Installation Guide

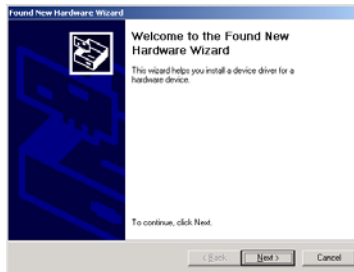
4. Windows has finished installing the software for the B-200. Click **Finish** to finish the installation.
5. The system will start to automatically install the Wireless LAN Utility. Please refer to procedures in Chapter 4 of the User's Manual on the CD-ROM.



## ZyAIR B-200 Quick Installation Guide

### Driver installation for Windows 2000

1. Connecting the B-200 USB Adapter to the USB port of a notebook or desktop PC.
2. After Windows 2000 detects the B-200 USB Wireless Network Adapter, the *Found New Hardware Wizard* window appears. Click **Next** to start the installation.



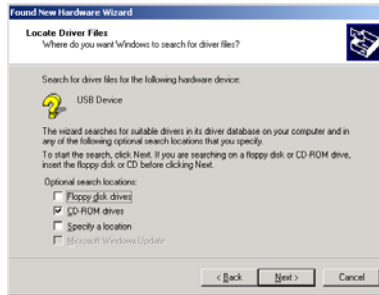
## ZyAIR B-200 Quick Installation Guide

3. A screen appears prompting the user to select an installation method. Select **Search for a suitable driver for my device (recommended)** and click **Next** to continue.



## ZyAIR B-200 Quick Installation Guide

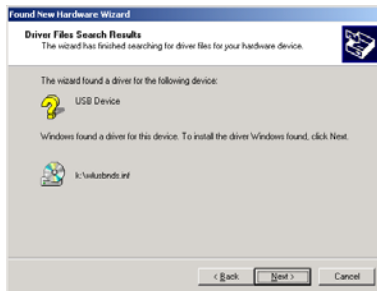
4. Ensure that the **CD-ROM driver** checkbox is selected. Insert the driver CD-ROM into the CD-ROM drive and click **Next** to continue.



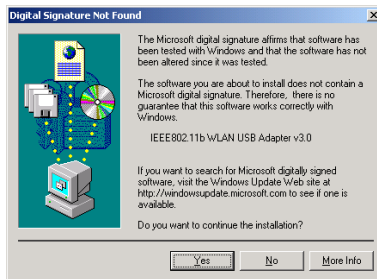


## ZyAIR B-200 Quick Installation Guide

- The following screen appears showing the driver search result. Click **Next** to continue the installation.

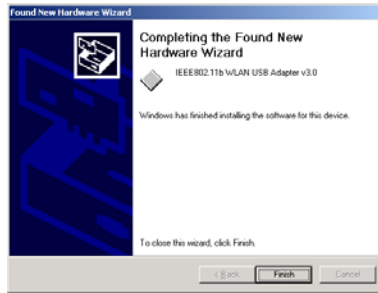


- The common Windows Digital Signature screen will appear. The Microsoft digital signature is not required for operation of the ZyAIR B-200. Simply click **Yes** to continue.



## *ZyAIR B-200 Quick Installation Guide*

7. Windows has finished installing the software for the B-200. Click **Finish** to finish the installation.
  
8. The system automatically starts to install the Wireless LAN Utility. Refer to procedures in Chapter 4 of the CD User's Manual.



## ZyAIR B-200 Quick Installation Guide

### Driver installation for Windows 98

1. Connect the B-200 USB Adapter to the USB port of a notebook or desktop PC.
2. After Windows 98 detects the B-200 USB Adapter, the Add New Hardware Wizard window appears. Click **Next** to continue the installation.



## *ZyAIR B-200 Quick Installation Guide*

3. A screen appears prompting the user to select an installation method. Select Search for the best driver for your device. (Recommended) and click Next to continue.



## *ZyAIR B-200 Quick Installation Guide*

4. Ensure that the CD-ROM drive is selected. Insert the driver CD-ROM into the CD-ROM drive and click **Next** to continue.

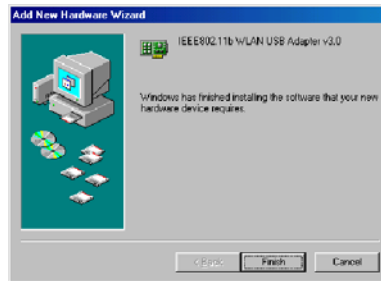


## ZyAIR B-200 Quick Installation Guide

- The following screen appears showing the driver search results. Click **Next** to continue the installation.

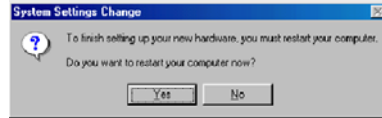


- Windows 98 copies files to the hard disk. The following screen will appear when the software installation has finished. Click **Finish** to finish the installation.



## *ZyAIR B-200 Quick Installation Guide*

- The following screen asks the user to restart the computer to finish the installation. Click **Yes** to restart the computer to make the hardware setup available.



## ZyAIR B-200 Quick Installation Guide

### Driver installation for Windows ME

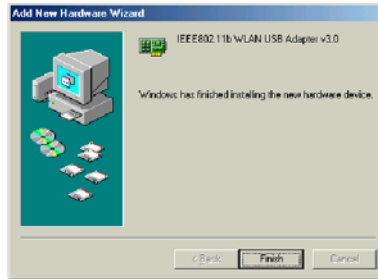
1. Connect the B-200 USB Adapter to the USB port of a notebook or desktop PC.
2. After Windows ME detects the B-200, the Add New Hardware Wizard window appears. Select Automatic search for a better driver (Recommended) and insert the driver CD-ROM into CD-ROM drive and click **Next** to continue.



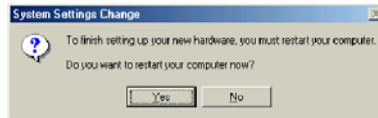


## ZyAIR B-200 Quick Installation Guide

- The system will find the setup files and follow the instruction to copy files to the hard disk. The following screen will appear when the software installation has finished. Click **Finish** to finish the installation.



- The following screen asks the user to restart the computer to finish the hardware setup. Click **Yes** to restart the computer to make the hardware setup available.



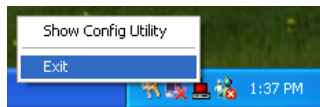
## ZyAIR B-200 Quick Installation Guide

### Using Wireless Utility In Windows XP

There are two ways to configure the B-200 USB Wireless Network Adapter in Windows XP. One is the **Wireless LAN Utility**; the other one is the **Windows Wireless Network Configuration**. To switch between those two ways, the user must enable or disable the Windows Wireless Network Configuration.

#### *Enable Windows Wireless Network Configuration*

1. Click the right key of the mouse and Exit Wireless LAN Utility.



2. Click Windows Wireless Network Configuration icon.



## ZyAIR B-200 Quick Installation Guide

### Windows Wireless Network Configuration

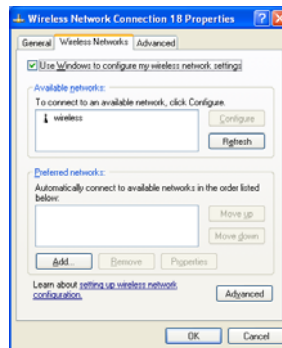
3. Click the **Advanced** button.



## ZyAIR B-200 Quick Installation Guide

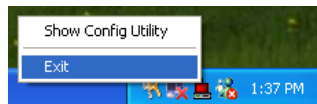
4. Make sure the “Use Windows to configure my wireless network settings” is checked and click **OK**.

**Notice: For more information about using the Windows Wireless Network Configuration, please refer to Microsoft Windows XP on-line help.**



### *Disable and Use Wireless LAN Utility*

1. Click the right key of the mouse and Exit the Wireless LAN Utility.



## ZyAIR B-200 Quick Installation Guide

2. Click Windows Wireless Network Configuration icon.



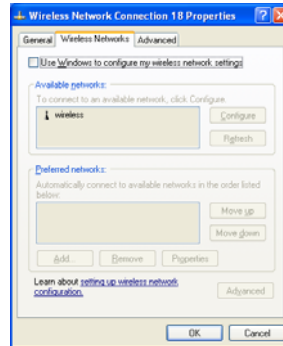
Windows Wireless Network Configuration

3. Click Advanced button.



## ***ZyAIR B-200 Quick Installation Guide***

4. Make sure the “Use Windows to configure my wireless network settings” is unchecked and click **OK**.



## ZyAIR B-200 Quick Installation Guide

5. Click Start -> All Programs -> IEEE802.11b WLAN USB Adapter v3.0 -> IEEE802.11b WLAN USB Adapter Utility to restart the Wireless LAN Utility.



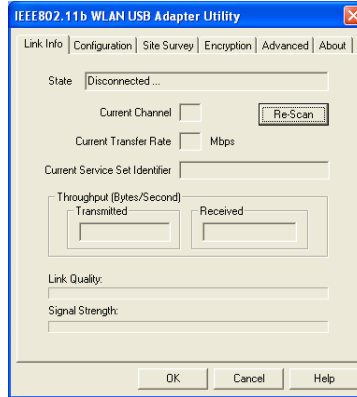
6. The Wireless LAN Utility will appear. Double-click the icon to open the configuration utility.



Wireless LAN Utility

## ZyAIR B-200 Quick Installation Guide

7. Click the **Re-Scan** button to start the Wireless LAN Utility. Please refer to the procedures at Configuring the USB Wireless Network Adapter of the User's Manual on the CD-ROM.



P/N : 6011-13000031